



## Content

Page

1	System module for conductor rail 0832 .....	2
2	Tools for conductor rail 0832 .....	6
2.1	Content of tool kit "Standard" .....	6
2.2	Content of tool kit "Profi" .....	10

Reprints and reproductions, even in excerpts, are only permitted with our approval.

© Conductix-Wampfler AG / 2009



First read the operating instructions BAL0832-0001 with the included system description. It is enclosed in the basic module.

## Conductor rail program 0832

### System module and tools

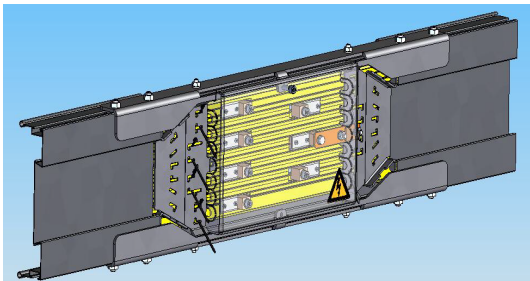
## 1 System module for conductor rail 0832

- The conductor rail of series 0832 is constructed on an efficient logistics and module concept. Here, logical units that contain all of the necessary parts are delivered pre-packaged, so that these can be delivered directly to the assembly location.

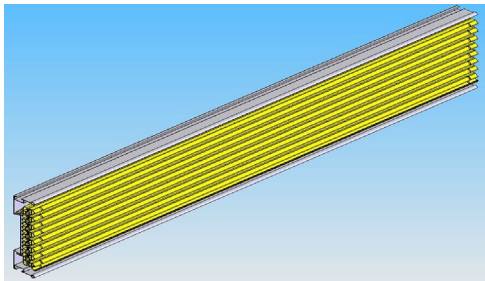
The following modules are available:

- A) **Basic module** - Contains everything that is needed once in an aisle, such as the power feed and end caps.  
**Note:** conductor strips, current collectors and displacement transducer system are not included.

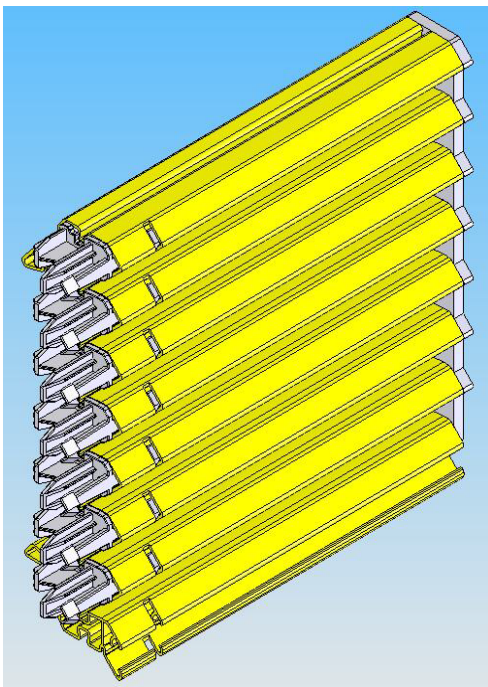
#### Content:



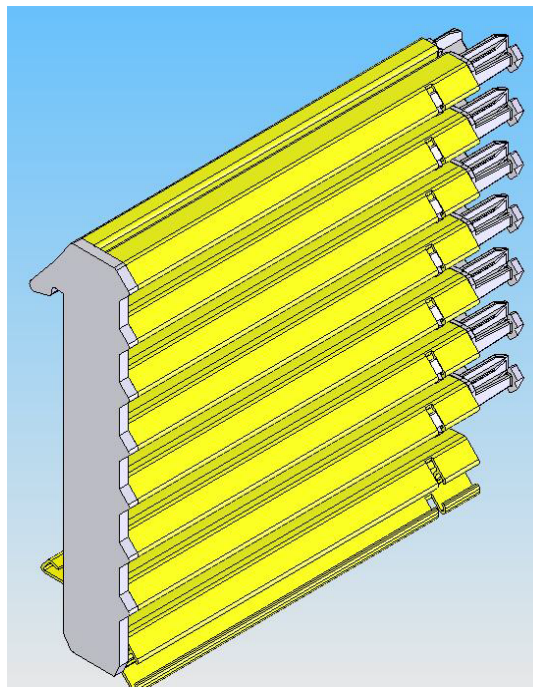
1 x power feed (incl. conductor strip and insulation profile- anchor point and assembly instructions)



3 x support profile incl. 3 x insulation profile 1000 mm (assembly instructions in the basic module)



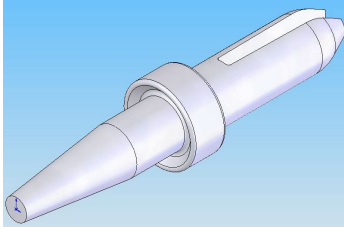
1 x end cap "L"  
(incl. assembly instructions)



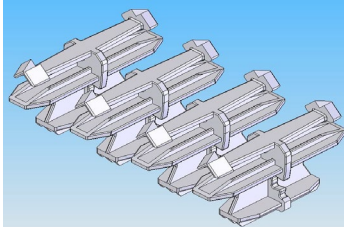
1 x end cap "R"  
(incl. assembly instructions)

Conductor rail program 0832  
System module and tools

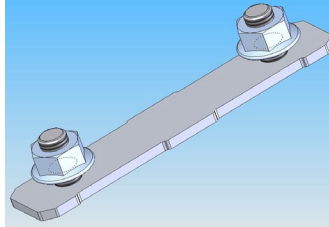
---



6 x connector pin (compare assembly instructions of the support profile)

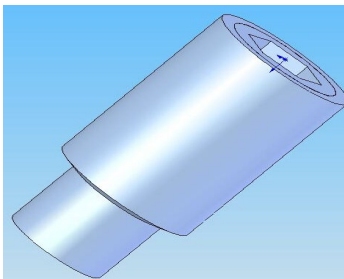


6 x insulating connector (compare assembly instructions of the insulation profile)

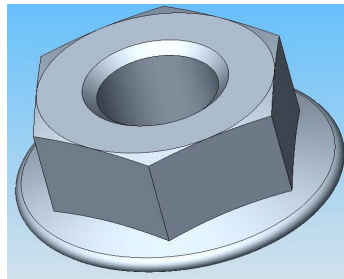


6 x clamping plate (compare assembly instructions of the support profile)

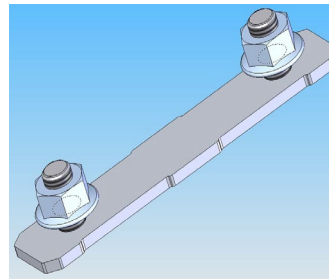
The **small part service packet** of the basic module contains the following:



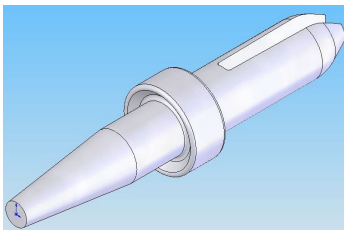
2 x setscrew



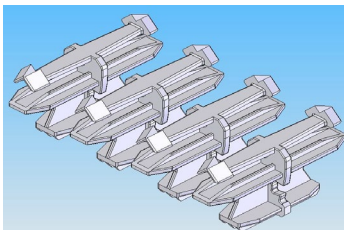
10 x self-locking nut with serrated bearing M8



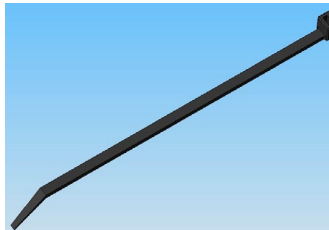
2 x clamping plate



10 x connector pin



10 x insulating connector

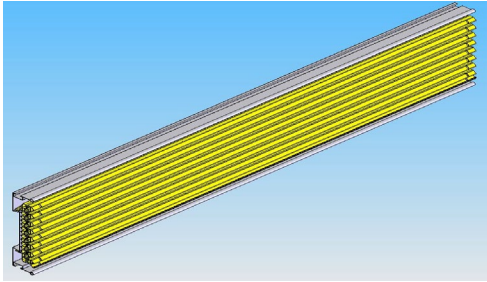


10 x cable tie

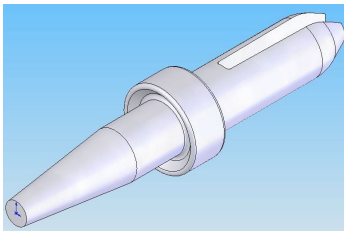
## Conductor rail program 0832 System module and tools

B) **Expansion modules** - Contain all aisle components for expanding the basic module to the aisle length.  
They are available in 24, 8 and 4 m.

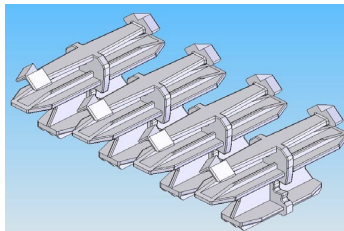
**Content:**



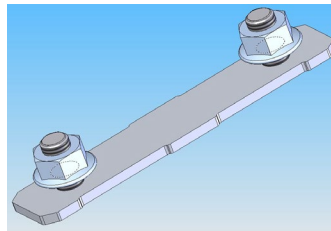
Insulation profile snapped into the support profile; 4 m.



Connector pin



Insulating connector



Clamping plate

Module length	24 m	8 m	4 m
Order No.	083215-024X7X12	083215-008X7X12	083215-004X7X12
	Quantity (units)		
Content			
Support profile	6	2	1
Insulation profile	6	2	1
Connector pin	12	4	2
Insulating connector	12	4	2
Clamping sheet	12	4	2

## Conductor rail program 0832

### System module and tools

**C) Conductor strip module -** Contains all conductor strips for each aisle including wiring (cross sections of 10 to 50 mm<sup>2</sup>). The lengths of the conductor strips depend on the order. The cables can be obtained in any length in reference to the conductor strip cross sections. It is a single-conductor Conductix-Wampfler rubber-sheathed flexible cable T-3 of the brand H07RN-F.

“Green-yellow” cores are also possible for any cross section. These are single core fine wire PVC wire conductors of model H07V-K. Crimp type sockets with M6 are provided to connect the cables to the power feed.

The conductor strip module can be equipped with the following components and cross sections:

Conductor strip	Cable	Green-yellow cable
10	10	10
16	16	16
25	25	25
35	35	35
50	50	50

Conductor strip and cable cross section in mm<sup>2</sup>

- D) Connector module** For connecting the conductor strip ends in longer systems. The index is located in the assembly instructions of the conductor strip connector module.
- E) Positioning module** Attachment of the barcode measuring system manufactured by Leuze. The description of contents is located in the assembly instructions of the positioning module.
- F) Repair module** For repairing damaged system sections. The description of contents is located in the assembly instructions of the repair module.

- The necessary assembly instructions are always located in the modules. Operating instructions of the system are located in the basic module, as well as the repair and tool module.
- If small parts are lost at the construction site, a limited replacement is available with the small part service packet, which is enclosed in the basic module. Additional small part service packets are available separately!
- Shorting system components:  
The conductor rail 0832 is designed as a 4 m system. The support profiles and the insulation profiles are delivered and installed in this length. It is always possible that collisions of connecting points, especially those of the support profile and the system hangers/rack consoles or other assemblies develop. In order to prevent these problems, 3 pieces of 1 m each are enclosed in the basic module. The rail joint can be repositioned by inserting such a section, thereby preventing the collision.
- If difficulties should occur, which cannot be prevented by these 3 sections, for example, because this problem occurs more than 3 x per aisle or because too much projection remains at the end of the aisle, which results in space problems, the support profile and the insulation profile can be simply shortened. The following must be hereby observed:



- Angularity and linearity of the cut.
- Non-deformation of the support profile.
- Deburring and slitting the insulation profile (using the saw jig).

### 2 Tools for conductor rail 0832

---

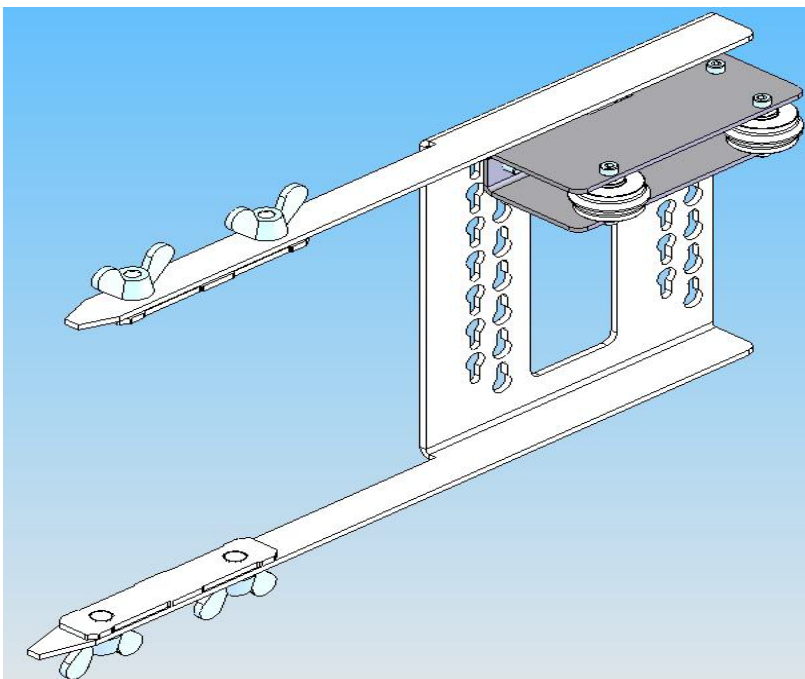
There are 2 tool kits for the simplified assembly - Standard and Profi. The Profi tool kit can also be leased.

#### 2.1 Content of tool kit “Standard”

- 1 x small part – service packed (compare the basic module for the content).
- 1 x feed in aid (compare the assembly instructions for strip insertion).



- 1 x straightening jig (compare the assembly instructions for the strip insertion)

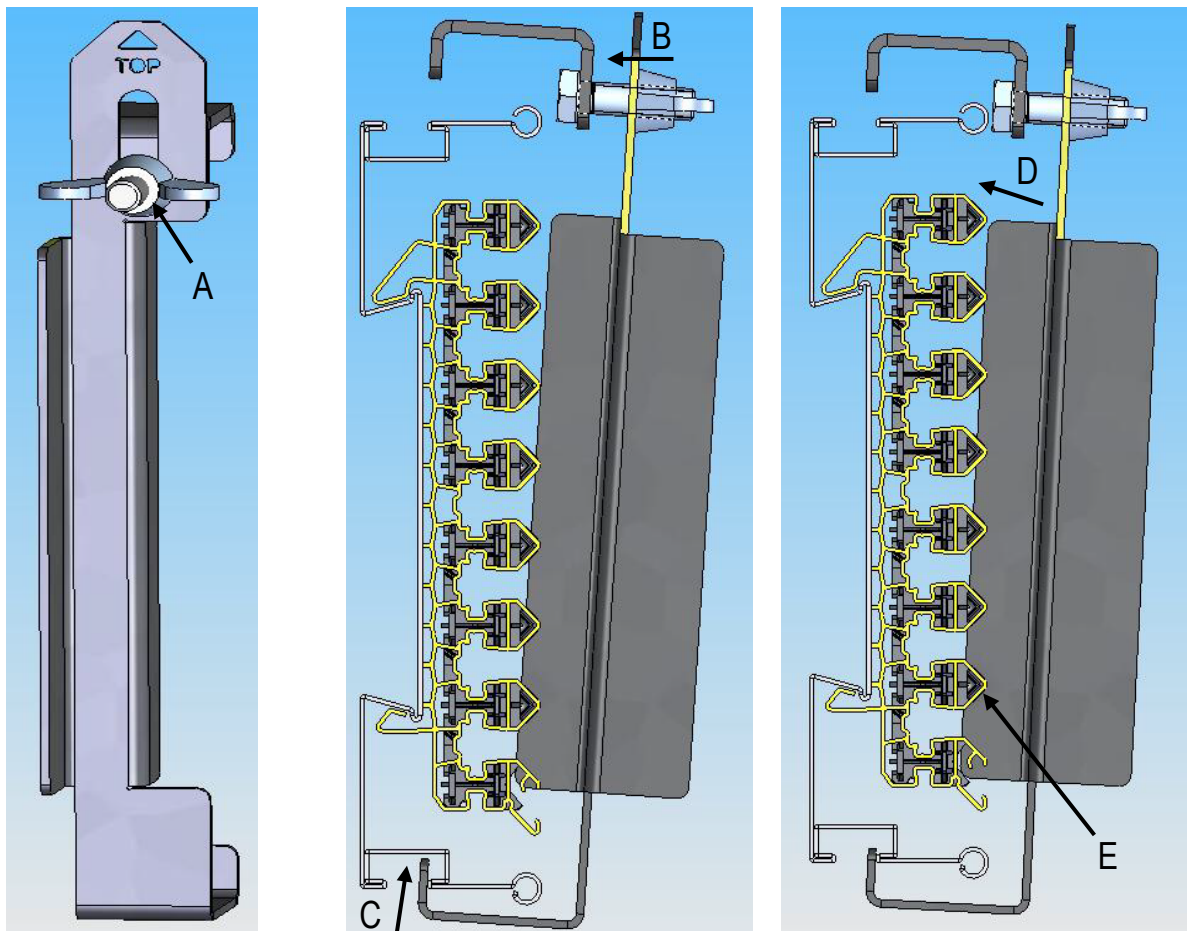


## Conductor rail program 0832

### System module and tools

- 1 x disassembly tool

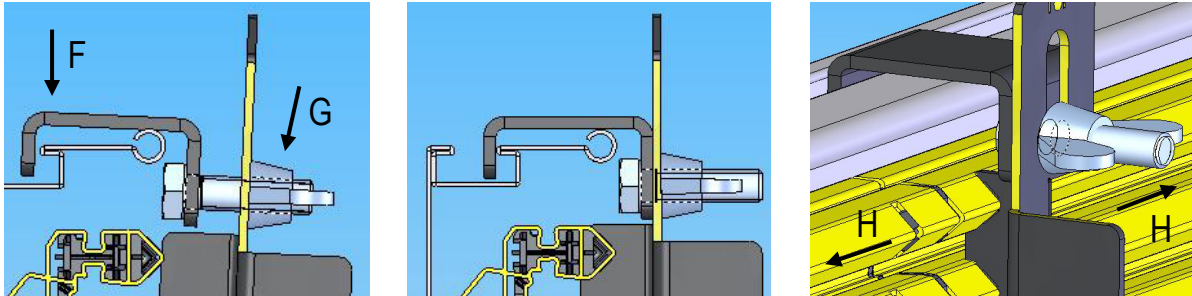
A disassembly tool is provided to separate the connected insulation profile ends. It is marked with "TOP" for proper handling. The wing nut must be released [A], so that the bracket can be shifted upward in longitudinal hole [B]. The disassembly tool must be attached below in the C-groove of the support profile [C]. When turning upward [D], it must be aligned so (compare image) that the bridge directed in the direction of the insulation profile can be inserted in the slits of the insulation profile (E).



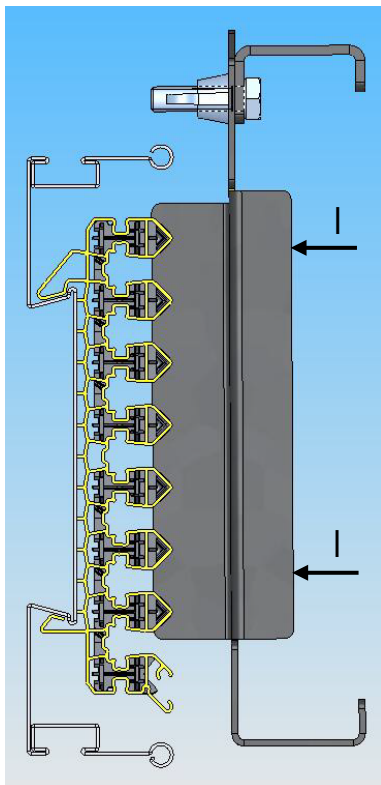
By pressing the bracket down (F: shifting in the longitudinal hole) and tightening the wing nut [G], the disassembly tool is attached in the upper C-groove. When the wing nut is tightened, the bridge presses into the slits of the insulation profile. This unlocks the snap hooks of the insulating connectors. When using the 2 disassembly tools, 2 connected insulation profiles are released again, independent from each other, can be shifted in X direction [H].

Conductor rail program 0832

System module and tools



If an attachment in the C-grooves of the support profile is not possible, the disassembly tool must be turned and pushed manually into the slits of the insulation profile with its handle [I], in order to release the snap hooks.

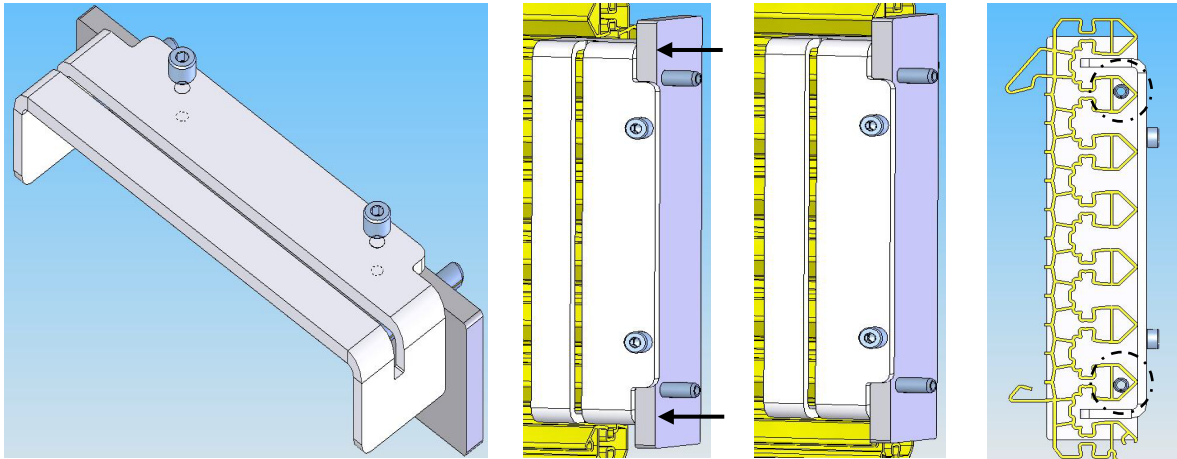




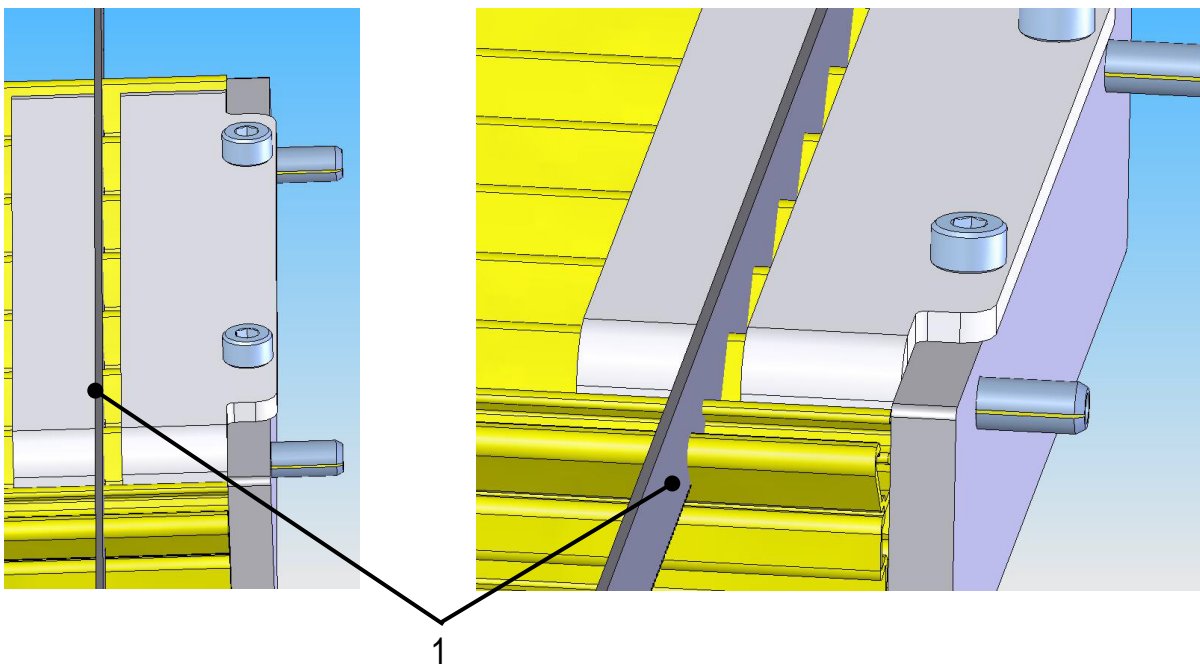
## Conductor rail program 0832 System module and tools

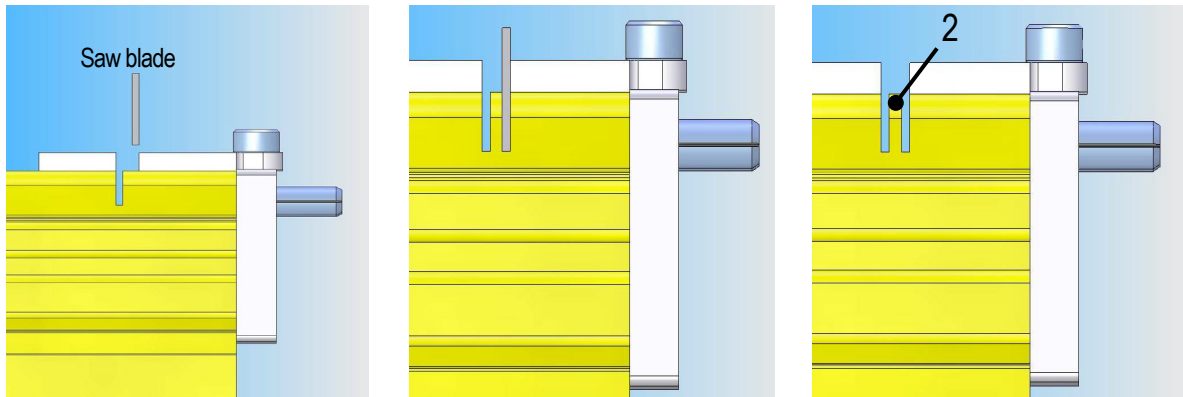
- 1 x saw jig

The slits must be sawed into the PVC profile with the aid of the saw jig. The device must be pressed into the insulation profile up to the stop (compare the following illustrations).

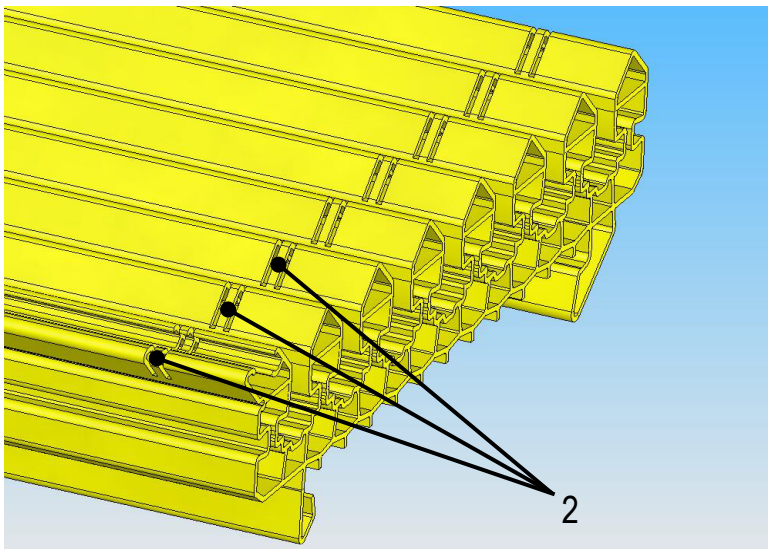


2 slits each are then produced with a hacksaw [1] on the left and right flush in the respective saw clearance. Thereby must be noted that the cutting depth provided with the gauge must be adhered to!





The remaining intermediate bridges (2) must be broken out with a small screwdriver.



By using such an insulating connector it must be checked to determine if the individual snap hooks snap easily behind the sawed areas.

## 2.2 Content of tool set “Profi”

- 1 x small part – service packet (compare the basic module for the content).
- 2 x feed in aid (compare the assembly instructions for the conductor strip insertion).
- 1 x straightening jig (compare the assembly instructions for the strip insertion).
- 1 x uncoiling device (compare the assembly instructions for the conductor strip insertion).
- 1 x disassembly tool (compare set “standard”).
- 1 x saw jig (compare set “standard”).
- 1 x wheel set.

## Conductor rail program 0832

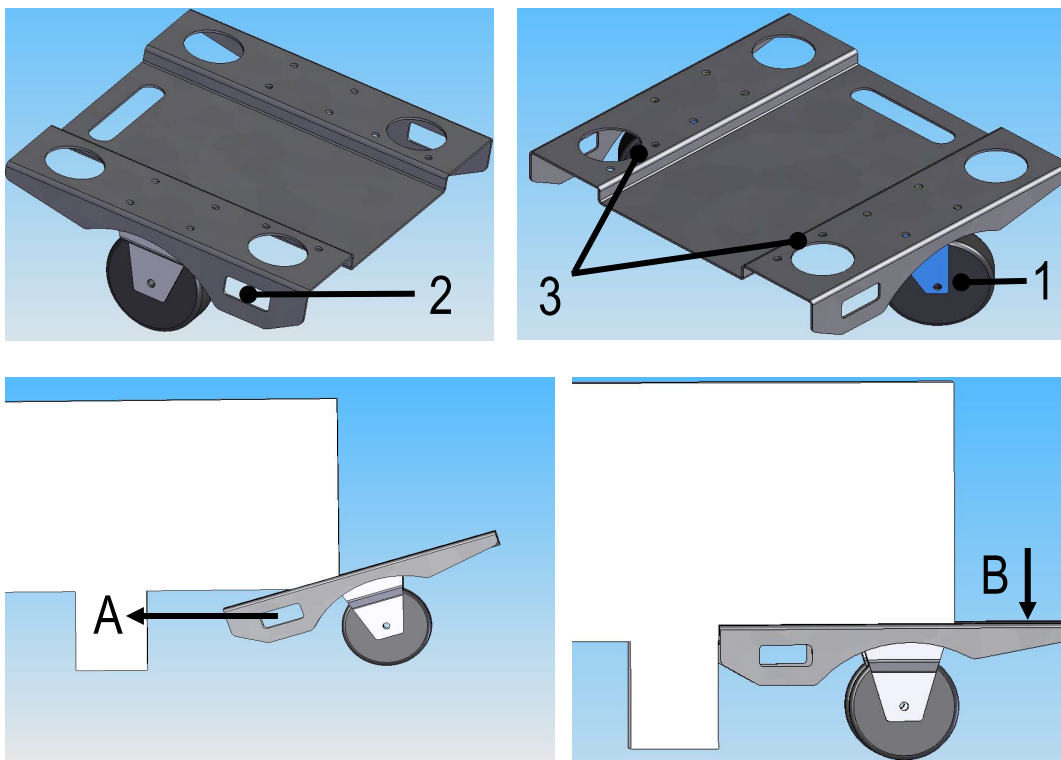
### System module and tools

---

The wheel set (compare illustration) simplifies the transport of the extension module. The wheel sets function by pushing underneath (A) and then pushing up (B).

One of the two wheel sets has movable rollers (1), so that turning is also possible.

2 modules can also be placed on top of each other and secured for transport with the aid of retaining straps (not included in the delivery). An opening (2) is provided for feeding through the retaining strap. We recommend transporting the expansion modules separately. 2 holes each are provided in the wheel sets for customer-specific applications (3). Additional adapters can be attached here with the aid of clamping plates (not included in the delivery).



#### Comments:

- This Operating Instruction - the modules and the tools - is included in the basic module.
- The illustrations are intended as aids. They may not show the current status of a component or assembly!



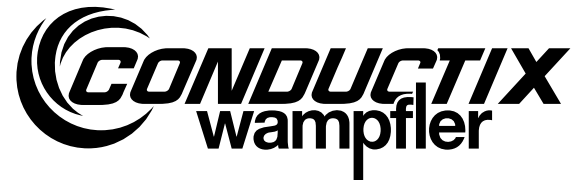
#### Note:

Conductix-Wampfler will not assume any liability and warranty for operation breakdowns and damages as a result of non-compliance with these assembly instructions!

## Operating instructions

### Conductor rail program 0832 System module and tools

---



**Conductix-Wampfler GmbH**  
Rheinstraße 27 + 33  
79576 Weil am Rhein - Märkt  
Germany

Phone: +49 (0) 7621 662-0  
Fax: +49 (0) 7621 662-144  
[info.de@conductix.com](mailto:info.de@conductix.com)  
[www.conductix.com](http://www.conductix.com)



Importer for the United Kingdom:  
**Conductix-Wampfler Ltd.**  
1, Michigan Avenue  
Salford  
M50 2GY  
United Kingdom

Phone: +44 161 8480161  
Fax: +44 161 8737017  
[info.uk@conductix.com](mailto:info.uk@conductix.com)  
[www.conductix.com](http://www.conductix.com)